

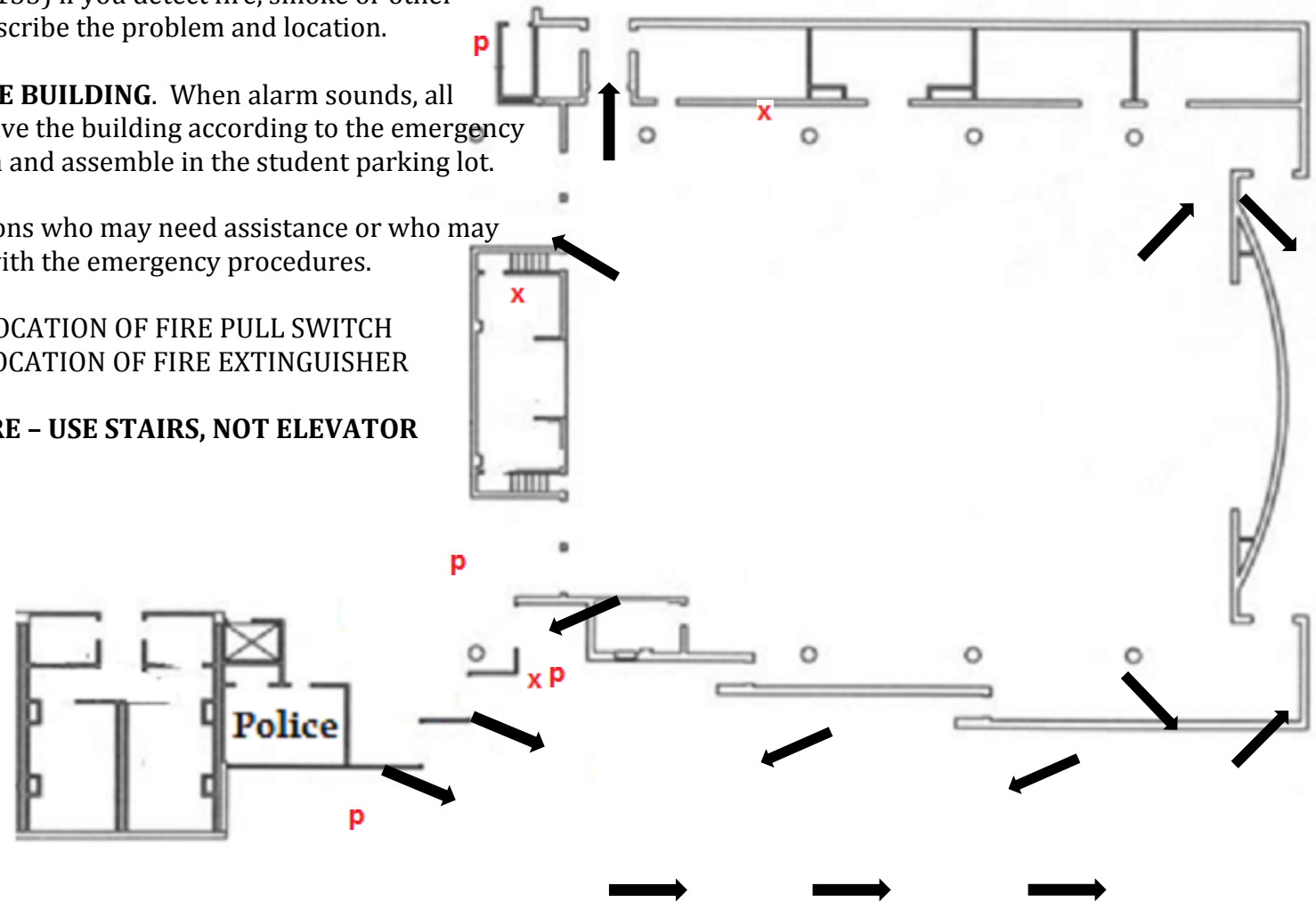
Emergency Exit Plan

College Park Campus
Kahlmus Auditorium

1. **CALL CAMPUS SECURITY** (4-0199) or **STUDENT SERVICES** (4-0133) if you detect fire, smoke or other emergency. Describe the problem and location.
2. **EVACUATE THE BUILDING.** When alarm sounds, all persons will leave the building according to the emergency evacuation plan and assemble in the student parking lot.
3. **HELP** any persons who may need assistance or who may be unfamiliar with the emergency procedures.

p - DENOTES LOCATION OF FIRE PULL SWITCH
x - DENOTES LOCATION OF FIRE EXTINGUISHER

IN CASE OF FIRE - USE STAIRS, NOT ELEVATOR



MISSISSIPPI STATE
UNIVERSITY
MERIDIAN